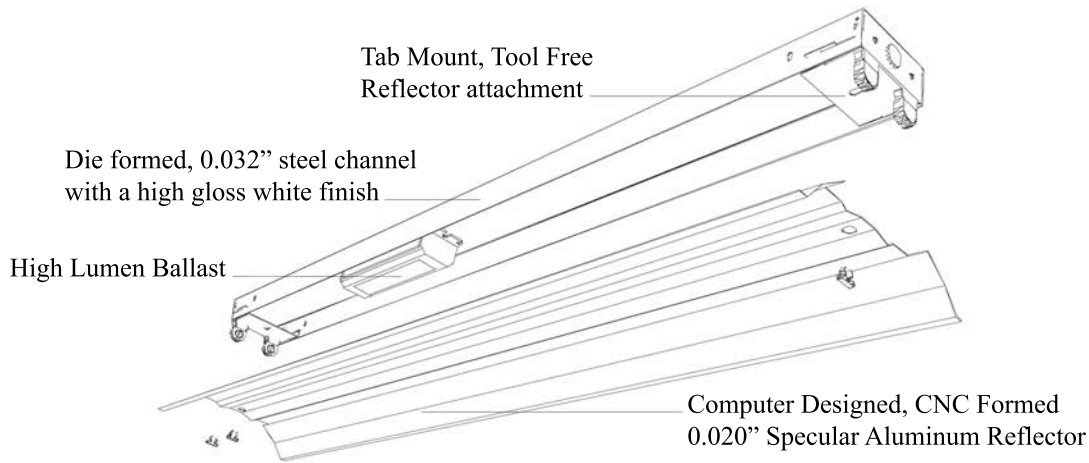




# Watt-Hawk<sup>™</sup> Display Master

With Vi-Tek 93<sup>®</sup> Plus T8 Lamps



**HH3103**

**2 Lamp 4 Foot Fluorescent Fixture**

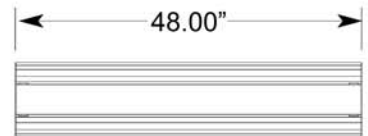
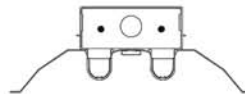
**Housing:** 20ga. (0.032") pre-painted steel die formed with sufficient knockouts for mounting and electrical supply

**Construction:** The solid four bend body provides added rigidity. The socket bars and endplates securely snap into place. The reflectors are attached to the fixture body with a tab lock system. No tools or additional fasteners are required for reflector installation and removal.

**Mounting:** Fixture is designed for chain or gripper aircraft cable installations.

**Reflector:** The reflector profile is optimized to 6 mirror angles per lamp using computer analysis and manufactured using state of the art CNC equipment. A protective premask is applied to all reflective surfaces prior to manufacture. Substrate is 0.020" high quality aluminum.

**Finish:** All cold rolled steel parts are painted with a smooth, glossy, highly reflective white enamel paint.



**Lights**  
By H&H

**Go Green!**

Flier DM02



800-637-3853

lightsbyhh.com

