



2' x 4' LED panel lights provide smooth and uniform light edge-to-edge for a clean, modern look. For use in drop ceilings or drywall using the optional recessed mounting kit.

Color: White

Weight: 34.0 lbs

Project:	Type:
Prepared By:	Date:

Driver Info		LED Info	
Type:	Constant Current	Watts:	59W
120V:	0.49A	Color Temp:	3500K
208V:	0.32A	Color Accuracy:	83 CRI
240V:	0.28A	L70 Lifespan:	100000
277V:	0.24A	Lumens:	7889
Input Watts:	58W	Efficacy:	135 LPW
Efficiency:	N/A		

Technical Specifications

Electrical

Dimming Driver:

Driver includes dimming control wiring for 0-10V dimming systems. Requires separate 0-10V DC dimming circuit. Dims as low as 10%.

Drivers:

Two (2) Constant Current, Class 2, 100-277V, 50/60Hz, 4kV Surge Protection, 620mA, 100-277V: 0.6A, Power Factor 99.6%

THD:

6.6% at 120V, 10.5% at 277V

Power Factor:

99.5% at 120V, 90.5% at 277V

Listings

DLC Listed:

This product is listed by Design Lights Consortium (DLC) as an ultra-efficient premium product that qualifies for the highest tier of rebates from DLC Member Utilities.
DLC Product Code: PSZXRCR3

UL Listing:

Suitable for damp locations. Recommended for indoor use only.

IESNA LM-79 & LM-80 Testing:

RAB LED luminaires have been tested by an independent laboratory in accordance with IESNA LM-79 and LM-80, and have received the Department of Energy "Lighting Facts" label.

Construction

IC Rating:

Suitable for insulated ceilings

Lens:

High-transmission acrylic lens with excellent distribution and uniformity.

Housing:

Lightweight housing is constructed of extruded aluminum.

Installation:

Modular splice box/driver compartment for quick installation. Integral Tee-grid ceiling clips make installation easy and secure.

Finish:

Formulated for high-durability and long lasting color.

Green Technology:

Mercury and UV free. RoHS compliant components. Polyester powder coat finish formulated without the use of VOC or toxic heavy metals.

LED Characteristics

LEDs:

Long-life, High efficiency, micro-power, surface mount LEDs; binned and mixed for uniform light output and color.

Lifespan:

100,000-hour LED lifespan based on IES LM-80 results and TM-21 calculations.

Color Consistency:

3-step MacAdam Ellipse binning to achieve consistent fixture-to-fixture color.

Other

California Title 24:

PANEL2x4-59/D10 complies with 2013 California Title 24 building and electrical codes as a commercial indoor fixture for general spaces when used with a vacancy sensor and 0-10V dimming control. Select a vacancy sensor using catalog number LVS800. 0-10V dimmer provided by others.

Warranty:

RAB warrants that our LED products will be free from defects in materials and workmanship for a period of five (5) years from the date of delivery to the end user, including coverage of light output, color stability, driver performance and fixture finish.

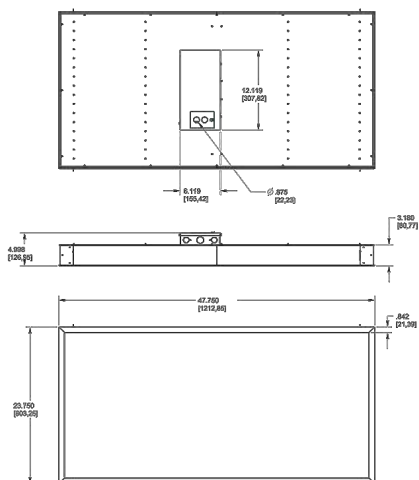
Buy American Act Compliance:

RAB values USA manufacturing! Upon request, RAB may be able to manufacture this product to be compliant with the Buy American Act (BAA). Please contact customer service to request a quote for the product to be made BAA compliant.

PANEL2X4-59YN/D10



Dimensions



Features

- Up to 60% savings on energy costs
- High-reflectance (91%) powder coat applied post fabrication for a more durable finish
- Ultra-smooth diffusion lens creates uniform light, edge to edge, for evenly lit spaces
- 100,000-hour LED Lifespan
- 5-year warranty

Ordering Matrix

Family	Size	Wattage	Color Temp	Dimming
PANEL	2X4 = 2' x 4'	44 = 44W 59 = 59W	Y = 3000K (Warm) YN = 3500K (Warm Neutral) N = 4000K (Neutral)	Blank = No Dimming /D10 = Dimmable