



| | |
|---------------------|--------------|
| Project: | Type: |
| Prepared By: | Date: |

| Driver Info | | LED Info | |
|--------------|------------------|-----------------|---------|
| Type: | Constant Current | Watts: | 59W |
| 120V: | 0.49A | Color Temp: | 4000K |
| 208V: | 0.32A | Color Accuracy: | 83 CRI |
| 240V: | 0.28A | L70 Lifespan: | 100000 |
| 277V: | 0.24A | Lumens: | 8146 |
| Input Watts: | 58W | Efficacy: | 140 LPW |
| Efficiency: | N/A | | |

Technical Specifications

Electrical

Dimming Driver:

Driver includes dimming control wiring for 0-10V dimming systems. Requires separate 0-10V DC dimming circuit. Dims as low as 10%.

Drivers:

Two (2) Constant Current, Class 2, 100-277V, 50/60Hz, 4kV Surge Protection, 620mA, 100-277V: 0.6A, Power Factor 99.5%

THD:

6.9% at 120V, 10.2% at 277V

Power Factor:

99.6% at 120V, 90.6% at 277V

Listings

DLC Listed:

This product is on the Design Lights Consortium (DLC) Qualified Products List and is eligible for rebates from DLC Member Utilities.
DLC Product Code: P4KKQ5K4

UL Listing:

Suitable for damp locations. Recommended for indoor use only.

IESNA LM-79 & LM-80 Testing:

RAB LED luminaires have been tested by an independent laboratory in accordance with IESNA LM-79 and LM-80, and have received the Department of Energy "Lighting Facts" label.

Construction

IC Rating:

Suitable for insulated ceilings

Lens:

High-transmission acrylic lens with excellent distribution and uniformity.

Housing:

Lightweight housing is constructed of extruded aluminum.

Installation:

Modular splice box/driver compartment for quick installation. Integral Tee-grid ceiling clips make installation easy and secure.

Finish:

Formulated for high-durability and long lasting color.

Green Technology:

Mercury and UV free. RoHS compliant components. Polyester powder coat finish formulated without the use of VOC or toxic heavy metals.

LED Characteristics

LEDs:

Long-life, High efficiency, micro-power, surface mount LEDs; binned and mixed for uniform light output and color.

Lifespan:

100,000-hour LED lifespan based on IES LM-80 results and TM-21 calculations.

Color Consistency:

3-step MacAdam Ellipse binning to achieve consistent fixture-to-fixture color.

Other

California Title 24:

PANEL2x4-59/D10 complies with 2013 California Title 24 building and electrical codes as a commercial indoor fixture for general spaces when used with a vacancy sensor and 0-10V dimming control. Select a vacancy sensor using catalog number LVS800. 0-10V dimmer provided by others.

Warranty:

RAB warrants that our LED products will be free from defects in materials and workmanship for a period of five (5) years from the date of delivery to the end user, including coverage of light output, color stability, driver performance and fixture finish.

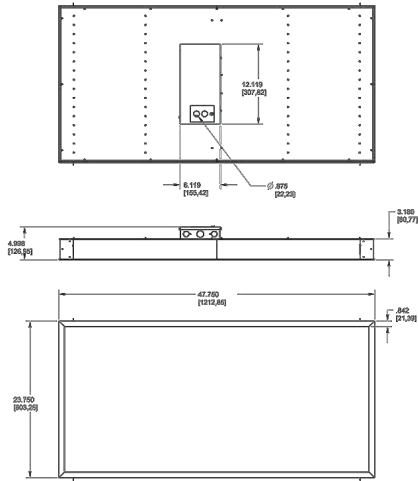
Buy American Act Compliance:

RAB values USA manufacturing! Upon request, RAB may be able to manufacture this product to be compliant with the Buy American Act (BAA). Please contact customer service to request a quote for the product to be made BAA compliant.

PANEL2X4-59N/D10



Dimensions



Features

- Up to 60% savings on energy costs
- High-reflectance (91%) powder coat applied post fabrication for a more durable finish
- Ultra-smooth diffusion lens creates uniform light, edge to edge, for evenly lit spaces
- 100,000-hour LED Lifespan
- 5-year warranty

Ordering Matrix

| Family | Size | Wattage | Color Temp | Dimming |
|--------|---------------|----------------------|--|---------------------------------------|
| PANEL | 2X4 = 2' x 4' | 44 = 44W 59 = 59W | Y = 3000K (Warm) YN = 3500K (Warm Neutral) N = 4000K (Neutral) | Blank = No Dimming /D10 = Dimmable |